

Forente

Your forensic technology partner in solving crime

Forensic Light Sources



Evidence Screening



Fingerprint Evidence



Document Examination



Ballistics



Trace Evidence



2022 Product Overview

LED forensic light sources

LIGHTcube – the modular forensic light:- LIGHTcubes can be stacked together with multiple modules of the same wavelength for more power or different wavelengths for different tasks. These lights are easy to clean to reduce DNA risks and designed without a cooling fan. Available in a wide range of wavebands from UV to IR and come complete with wavelength matched filters and goggles.



Superlite M05:- The most powerful speciality light source in its class. 11 high power LED wavebands from UV to IR, uniform lighting, user adjustable spot size, 3 user selectable power levels, incredibly long battery life up to 4 hours. The kit includes long pass filter goggles, ruggedised carry case, car and mains charger and camera filters.

Shoe mark and flat surface forensic light source



OR-GZJ40:- A powerful compact forensic light source delivering 30 Watts output capable of projecting a linear white illumination several metres. It is provided with telescopic detachable handle. Ideal for detection of shoe marks on flat surfaces or examination of Gel lifts.

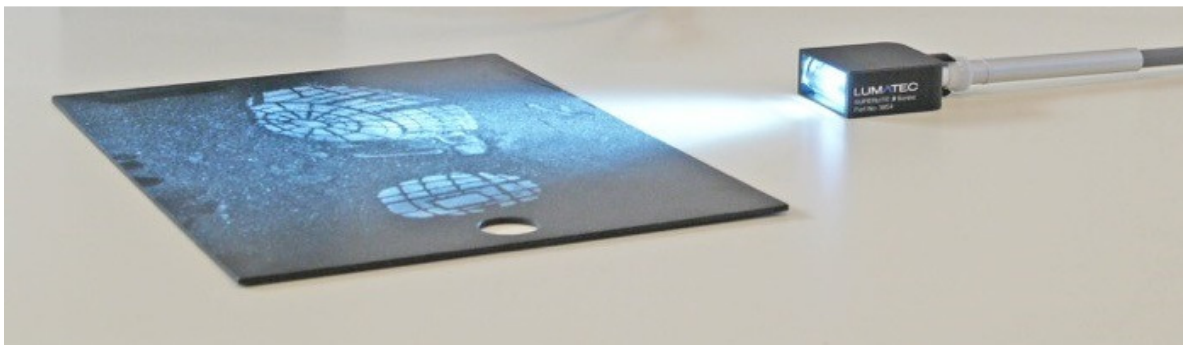
Forensic white LED lights

ForenteQ Ltd provides a wide range of forensic white lights to suit a range of budgets. Models include the highly competitive **OR-GYD10** light which provides 3 Watts white circular uniform beam with integrated rechargeable battery. Higher power models are also available at 12 Watts (as pictured right) that can be provided with optional contrast filters.



Tuneable forensic light source

Superlite F05:- A powerful tuneable light source with liquid light guide. It provides 10 discrete wavelength bands from UV to Red in one compact battery operated and mains powered unit. Ultra high power densities with uniform beam and variable intensity control.



A range of accessories are included including oblique line illuminators for illuminating evidence such as gel lifts, optical evidence magnifier and a transmitted light pad. The evidence magnifier is particularly useful for revealing and photographing chemically treated or powdered fingerprints.

Forensic lasers

Revelation Cordless Dual Forensic Laser:- the latest compact laser in the Revelation family of products. This system is ultra lightweight 1.5kg and easy to clean. The laser provides 7 Watts Blue at 445nm and 7 Watts Green at 520nm.



Revelation Dual Forensic Laser 445/520:- operational and validated in many UK police forces the Revelation dual provides up to 10 Watts Blue at 445nm and 8 Watts Green at 520nm. 532nm available on request.

Revelation 577:- for applications that demand a high power yellow laser for Gentian Violet, blood examination and latent finger marks the Revelation 577 nm provides 3.5 Watts output.



Fingerprint development

Ninhydrin / DFO / Indandione

NINcha series:-

- ✓ Available in 4 standard sizes
- ✓ Stand alone cabinets. No water plumbing or external extraction.
- ✓ Touch panel control with data logger for quality control and reporting
- ✓ Precise monitoring of temperature & humidity inside the cabinet
- ✓ Fast recovery times in-line with FVM/DSTL requirements
- ✓ Pre-programmed treatment cycles
- ✓ Internal air filters and optional external ventilation
- ✓ UV Decontamination unit
- ✓ Used extensively in the UK & Ireland. Validated to ISO17025 in operational labs



NINcha P31



NINcha S31



NINcha S31 with trolley



NINcha M31



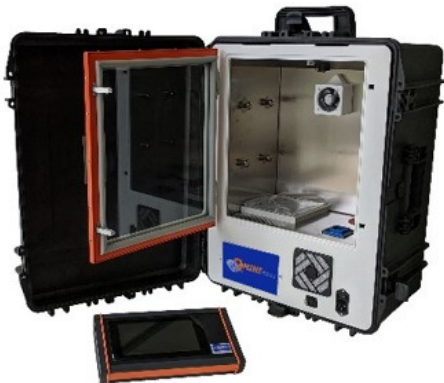
NINcha L31

Fingerprint development superglue cabinets

MEGAfume series:- High performance fingerprint development on porous and semi porous surfaces with a focus on quality monitoring and ease of cleaning and maintenance.



- ✓ Available in 3 sizes:- benchtop, mid-size and extra large
- ✓ Internal easy clean structure with simple filter change system
- ✓ Touch panel control with data logger for quality control and reporting
- ✓ Automatic or manual control operating cycle
- ✓ Dual temperature operation for liquid superglue or Polycyano
- ✓ UV Decontamination unit
- ✓ Innovative filter management system that minimises waste



MINIfume Portable Superglue

Cabinet:- The MINIfume superglue is built within a Peli waterproof transit case and is ideal for use in a vehicle or remote locations. It is provided with a touch screen control and innovative filter management system.

Scene of crime superglue development

MOBifume System:- For development of fingerprints on vehicles in a garage/ tent, or directly at the crime scene. A portable system with secure radio link remote control of the evaporation / humidity and filter process.



- ✓ Scalable system where multiple systems can be grouped together to develop large areas
- ✓ Easy to clean and maintain
- ✓ Touch panel tablet provided to control operation via secure radio link
- ✓ Minimal cables and easy to set to up
- ✓ Dual temperature operation for liquid superglue or Polycyano

Vacuum superglue development



Voigtländer Vacuum Superglue system:- offers a system for developing fingerprints with cyanoacrylate within a vacuum which provides an excellent method of developing prints on partially closed plastic bags, drugs wraps. 2 sizes available.

Fingerprint evidence

ESDA Toner and Ozone

Reduction:- The TORnado SF91 is a system designed for use with the Foster and Freeman ESDA's to reduce toner and ozone exposure produced from the ESDA process. Included HEPA particulate filter, touch panel control and integrated illumination source.

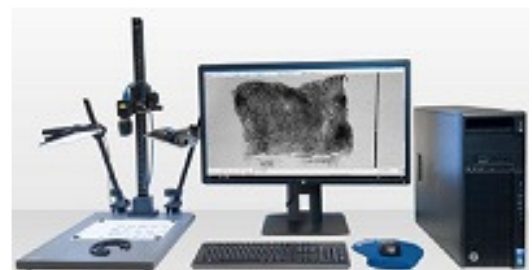


POWDERado:- A downdraft filter workstation for fingerprint powder applications. Stainless steel working surface, pre-filter and particulate filtering, touch panel controls and integrated White/UV lighting.

Laboratory Imaging Dactyloscopy PRO Workstation:-

is a dedicated digital fingerprint live feed imaging, processing and comparison system providing detailed mark analysis and casework management.

Image capture, processing, annotation, measurements and comparison are integrated into the LUCIA Forensic software.



Photography & evidence imaging

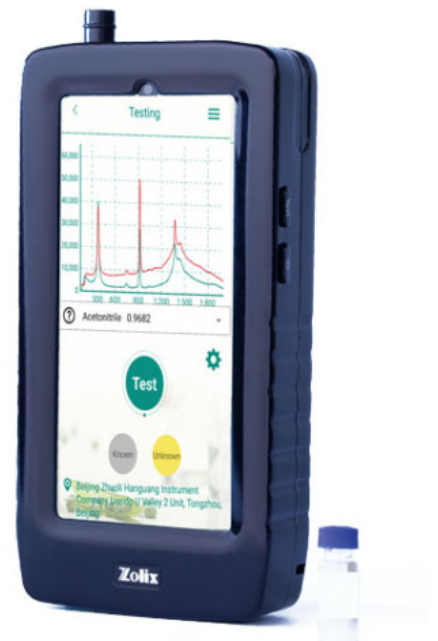
Agilelite:- A powerful lighting attachment for your DSLR camera that provides rapid visible and fluorescent. Compatible for Nikon and Canon DSLR cameras. Pre-scaled 1:1 images in less than 5 seconds of tool marks, fingerprints, body fluids etc..



PHOTOvent:- Motorised downdraft filtered photography workstation compatible with the DCS-3/4/5 system from Foster and Freeman. Stainless steel construction, strong downdraft air system (HEPA filtering), motorised camera arm and variable height adjustment.

Explosives and drugs detection

HANDHELD RAMAN Spectrometers:- from Zolix provides a compact handheld spectrometer with look up and identification library for drugs and explosives analysis. 2 versions available at either 785nm or 1064nm. Compatible with liquids, powders, colloids and solids.



Evidence screening in the lab and at scene

SCENEview BV800 Rapid visualisation of untreated or chemically treated blood and screening of GSR on a wide range of surfaces including clothing, carpets and floors.



- ✓ Detects diluted blood up to 50,000 times dilution
- ✓ Infra-Red and colour imaging with 5Mpix camera
- ✓ Integrated IR light source
- ✓ Integrated Red Orientation light
- ✓ New integrated LED lights (Choice of UV, Violet, Blue or Green for detection of body fluids)
- ✓ Residual light amplifier with 70,000x amplification for use with chemical reagents
- ✓ Easy to clean design for DNA sterilization

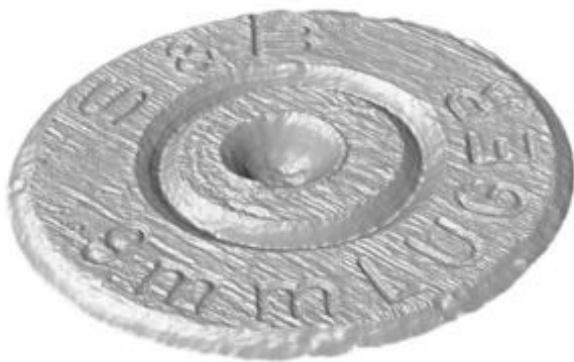


LABview PRO:- is designed for the laboratory to aid the screening and detection of a wide range of evidential material including biological traces, fibres and hairs. The system is modular allowing additional lighting modules to be added.

The touch screen control provides easy control of lighting, filters, image and video capture. The system is either wall mounted or is supplied on a stainless steel pedestal.

Ballistics

Phenom-Perception GSR:- The world's first automated desktop scanning electron microscope for GSR. Electron optical magnification of x200,000, EDS sensor for elemental detection and ASTM E1588/ENFSI compliant analysis / classification software. Can accommodate up to 30 x GSR stubs at a time. UKAS accredited.



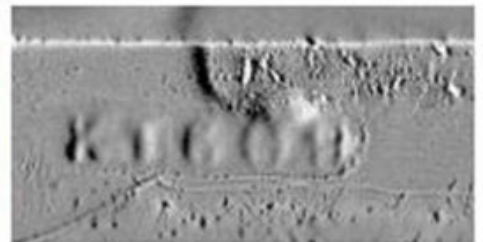
BALSCAN:- Is a dedicated workstation for high resolution 2D and 3D imaging of fired ammunition. Images can be saved to a database or network. Images can be annotated, then compared and matched with sophisticated comparison software.

Projectina VisionX:- is the first and only fully motorized Ballistics comparison microscope to integrate with IBIS® (Integrated Ballistic Identification System), making it the most powerful and effective ballistics analysis and confirmation tool in the industry.



Serial number recovery for firearms and vehicles VIN plates

Regula 7517:- Is an innovative system for non destructively recovery of firearms and ammunition serial numbers using a magneto-optical technique. A repeatable recovery process of corroded or mechanically removed serial numbers in seconds.



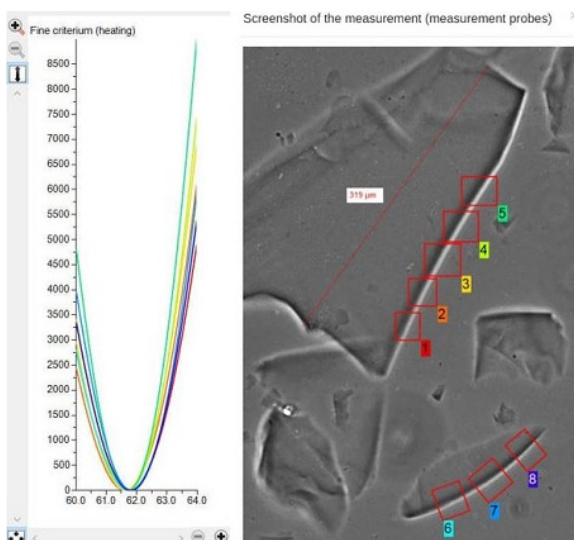
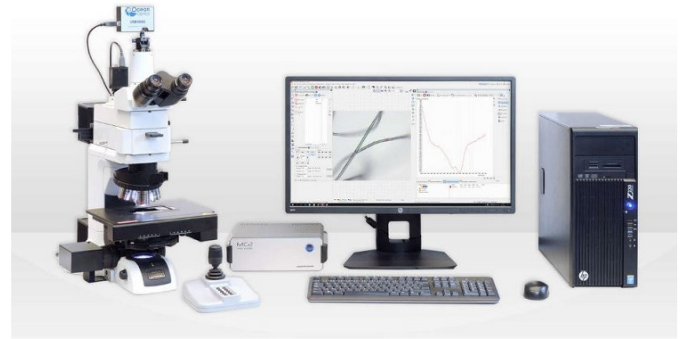
Regula 7505M:- Is an innovative system for the non destructive recovery of vehicle VIN numbers. It detects effortlessly corroded VINS, altered VINS through electric arc welding, letters and symbols alterations etc.. The instrument is provided in a Peli type transport case.



Trace evidence, tool marks and shoe marks

UV-VIS-NIR Micro Spectrometer

This instrument combines a NIKON microscope with a high precision motorised stage and pin hole UV-visible-NIR micro-spectrometer. High precision colour measurement with 1 micron repeatability XY stage.



The Lucia RI Refractive index

measurement system:- Uses the oil immersion method combined with a NIKON microscope and Mettler hot stage. Up to 40 re-sizeable measurement probes and reproducibility of measurements under 0.00002 (standard deviation)

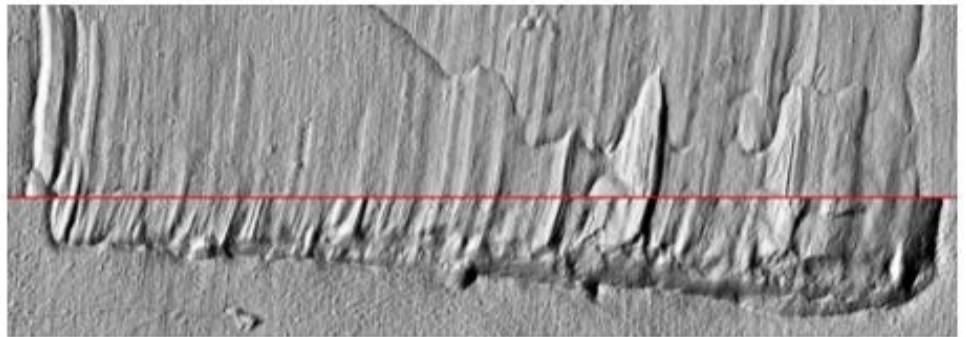
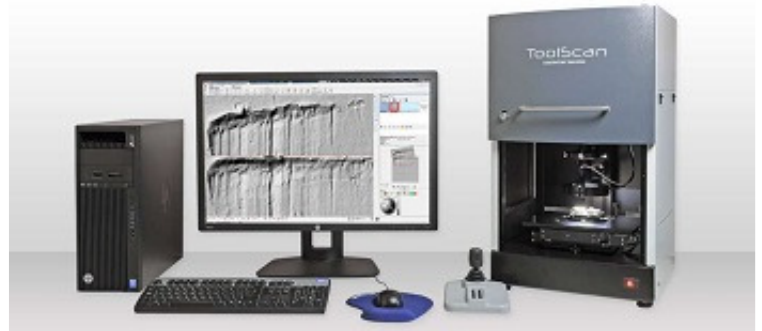
Milu FW10 Footprint scanning

system A versatile system for scanning and 1000 dpi digital capture of footprints at the crime scene. The system relies on scattered light detection and works for a variety of footprint marks in dust, blood or wet marks.

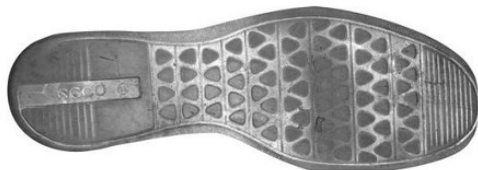


Trace evidence, tool marks and shoe marks

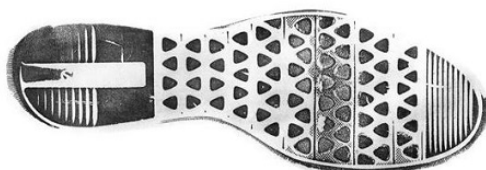
TOOLSCAN A complete workstation for imaging tool marks in 2D and 3D. The system provides a full set of comparison functions for precise matching. Suitable for a wide range of objects including cylinder locks, padlocks, cables, tyre pieces, cartridge cases, bones etc..



Directly scanned shoe sole



Direct shoeprint



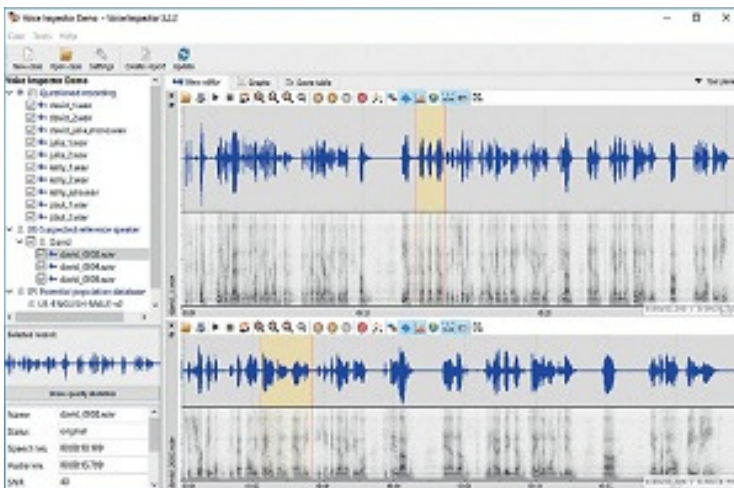
TRACOSCAN is a versatile workstation for examination of shoeprints, documents, fingerprints and other flat surfaces. High resolution 1000dpi images can be saved, annotated, measured and compared.

Forensic voice identification



The Phonexia Voice

Inspector:- provides police forces and forensic experts with a highly accurate speaker identification tool that supports criminal investigations. It uses the latest voice biometry algorithms to recognise a speaker automatically. It provides scoring to likelihood ratio, detailed reports and graphic presentation.



Forensic drying cabinet



Voigtländer Forensics Evidence

Drying Cabinet:- This is the only drying cabinet on the market that is based on electronic humidity control which prevents touch and cross contamination. Easy to clean and maintain design.

Rapid DNA extraction



PDQ-EX2400 Automated DNA extraction technology. Robust DNA extraction device that can achieve PCR and human profile ready DNA in under 10 minutes. The compact size means it can easily be placed in a laminar flow hood or on a benchtop. The PDQ-EX2400 is a 24 sample extractor with a small footprint 200 mm x 200mm

DNA extraction Kits

prepGEM Universal – DNA extraction

kits:- provides a rapid extraction kit for saliva, buccal, dispersed cells, insect and most animal tissues. It also provides an extremely fast and effective tool for CRISPR DNA preparation.



prepGEM Bacteria – DNA extraction kits:-

provides a temperature driven and rapid manual extraction protocol for a wide range of bacteria types. The kits works well for Gram +ve and Gram –ve capsulated and mixed samples.

DNA extraction Kits



forensicGEM Universal DNA extraction kit:- a chemistry reagent DNA extraction kit for a wide range of forensic samples including blood, saliva and buccal swabs.

ForensicGEM Sperm DNA extraction kit :- a temperature driven rapid kit for extracting DNA from tough sperm heads in typically 11 minutes.



RNAGEM RNA Extraction kit:- is ideal for preparing RNA from mammalian cell culture, laser capture micro-dissections and FACS-prepared cell populations.

Advanced document examination



Regula Forensics 4308:- Is an advanced second line forensic spectral comparator with over 30 integrated light sources, hyperspectral imaging and dual integrated camera for forensic level examination of questioned documents.

Regula Forensics 4307:- Is an advanced second line forensic spectral comparator with 29 integrated light sources, x 200 magnification and supplied with a built in PC.



Regula Forensics 4305DMH:- Is an advanced second line forensic spectral comparator with 21 integrated light sources, x 100 magnification.

AB8000:- Is an advanced instrument for handwriting examination that provides quantitative analysis of pen tip force – a breakthrough technology for handwriting analysis.



Express document examination



Regula Forensics 4205D:- Is a desktop standalone document examination instrument with up to 12 integrated light sources, 10 inch TFT screen and 5Mpx camera. It's a low cost device ideal for express verification and for teaching applications.

Regula Forensics 8003M:- Is a portable system for verification of currency and ID documents. It provides a wide range of illumination where images can be stored, compared, annotated and cross referenced against a reference library.



Regula Forensics 4115D:- Is a low cost desktop workstation with 8 integrated light sources, digital camera and 7 inch TFT display.

Regula Forensics 4303M:- Is a desktop standalone instrument with up to 8 integrated light sources. It combines an optional camera adapter for image capture.



Forensic magnifiers



Forensic Magnifiers - ForenteQ Ltd provide a huge range of forensic magnifiers including low cost eye loupes to more sophisticated magnifiers that include digital camera, integrated lighting and display screen. These magnifiers can be used for a wide range of applications including:-



- Micro-print detection
- Alterations to documents
- Intaglio and embossed print
- UV security print in passports, ID cards and currency
- Anti-stokes security features
- Fingerprint analysis

CLIMS – Forensic and laboratory information management system



CLIMS:- A forensic and Laboratory Information Management System (LIMS) that is a complete case management platform to provide chain of custody together with a powerful modular case and workflow management for all forensic laboratory branches. ISO17025, ENFSI compliant equipped with mailing, calendaring and extensive fast and accurate reporting tools including for staff and equipment.

Modules include:-

- Digital forensic
- Ballistics
- Biology
- Chemistry
- DNA
- Fingerprint
- Questioned document
- Narcotics
- CSI



About Us

ForenteQ Limited is a leading UK and Ireland supplier of innovative forensic science equipment. Established in 2015 our offices are in Warwick, central England.

With over 100 bespoke product lines we serve and support the forensic police forces, educational sectors and government laboratories.

Our business operations are accredited to the quality standard of ISO9001:2015.



ForenteQ's office in Warwick

Our services include:-

- ✓ Equipment sales
- ✓ On-site installation
- ✓ Product training
- ✓ Product servicing and service contracts
- ✓ ISO17025 traceable calibration
- ✓ Extended warranty plans

Forente



Your forensic technology
partner in solving crime

Please contact us to find out more

E: info@forenteq.com

T: +44 (0)1926 676402

www.forenteq.com

ForenteQ Ltd, Pure Offices, Lake View House, Wilton Drive,
Tournament Fields, Warwick, CV34 6RG United Kingdom